



Stantec Consulting Services Inc.
 9 Chapin Lane, Suite C
 Pawling NY U.S.A.
 12564
 Tel. 845.855.1255
 Fax. 845.855.1780
 www.stantec.com

Stantec

Copyright Reserved

The Contractor shall verify and be responsible for all dimensions. DO NOT scale the drawing - any errors or omissions shall be reported to Stantec without delay.
 The Copyrights to all designs and drawings are the property of Stantec. Reproduction or use for any purpose other than that authorized by Stantec is forbidden.

Consultants

Legend

Notes

Revision

Issued

Permit Seal

**PROGRESS PRINT
 NOT FOR
 CONSTRUCTION
 NOVEMBER 19, 2008**

Client/Project
 Town of Patterson

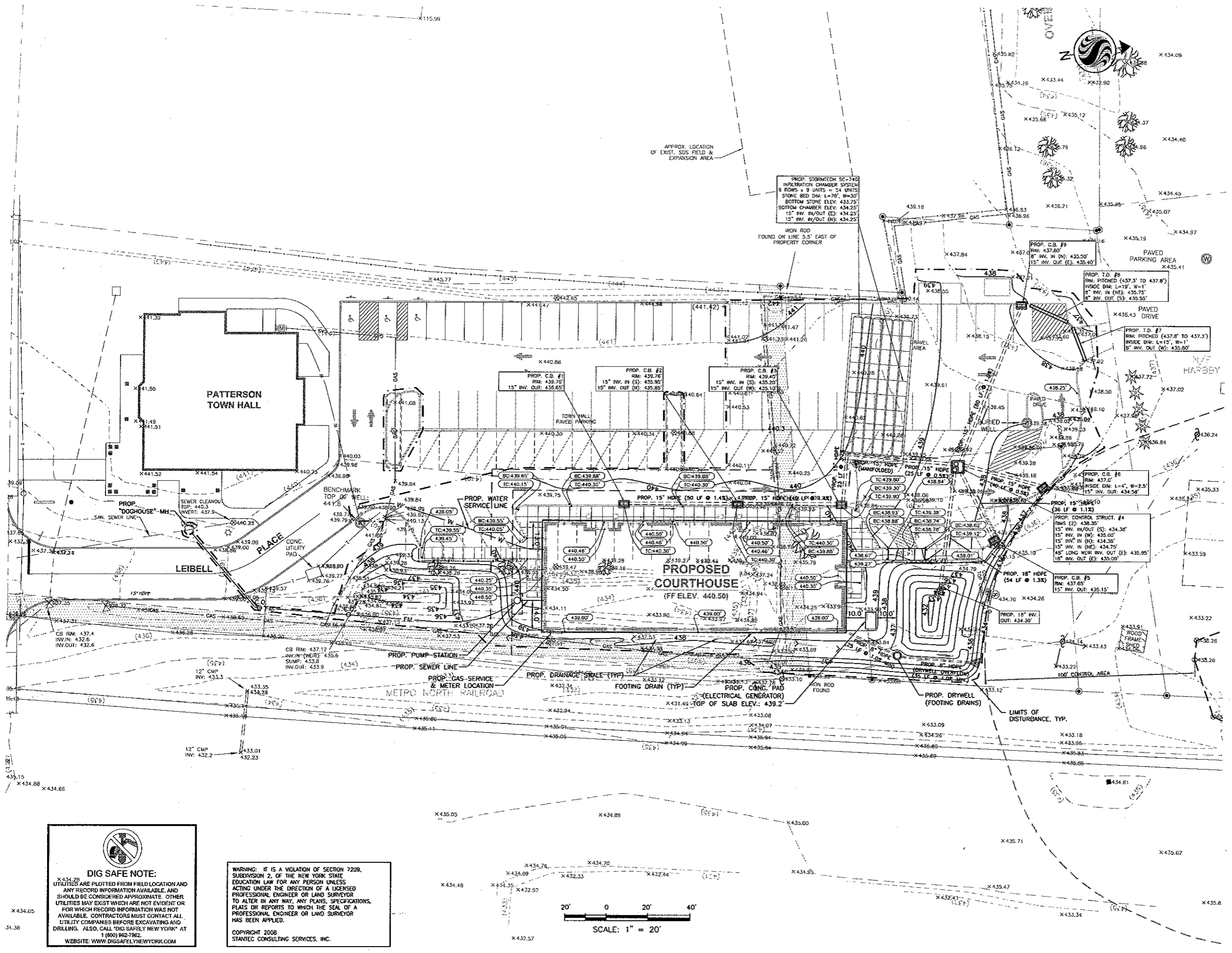
New Courthouse

Putnam County, NY

Title
GRADING, DRAINAGE & UTILITY PLAN

Project No. 190700031 Scale AS NOTED

Drawing No. C3 Sheet 4 of 9 Revision 0



U:\190700031\Drawings\Plot_SettC3_GRAD_EPSC_L.dwg, C3-GRADING DRAINAGE EROSION, 11/19/2008 3:24:12 PM, d:\habebeba, U:\190700031\WB-CANON\1908

DIG SAFE NOTE:
 UTILITIES ARE PLOTTED FROM FIELD LOCATION AND ANY RECORD INFORMATION AVAILABLE, AND SHOULD BE CONSIDERED APPROXIMATE. OTHER UTILITIES MAY EXIST WHICH ARE NOT EVIDENT OR FOR WHICH RECORD INFORMATION WAS NOT AVAILABLE. CONTRACTORS MUST CONTACT ALL UTILITY COMPANIES BEFORE EXCAVATING AND DRILLING. ALSO, CALL "DIG SAFELY NEW YORK" AT 1 (800) 952-7982.
 WEBSITE: WWW.DIGSAFELYNEWYORK.COM

WARNING: IT IS A VIOLATION OF SECTION 7209, SUBDIVISION 2, OF THE NEW YORK STATE EDUCATION LAW FOR ANY PERSON UNLESS ACTING UNDER THE DIRECTION OF A LICENSED PROFESSIONAL ENGINEER OR LAND SURVEYOR TO ALTER IN ANY WAY, ANY PLANS, SPECIFICATIONS, PLATS OR REPORTS TO WHICH THE SEAL OF A PROFESSIONAL ENGINEER OR LAND SURVEYOR HAS BEEN APPLIED.
 COPYRIGHT 2008
 STANTEC CONSULTING SERVICES, INC.

